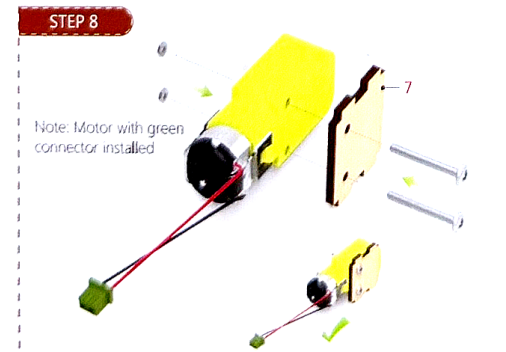
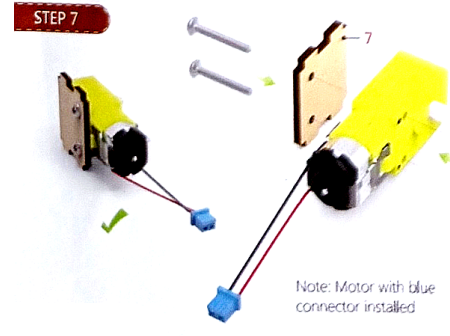
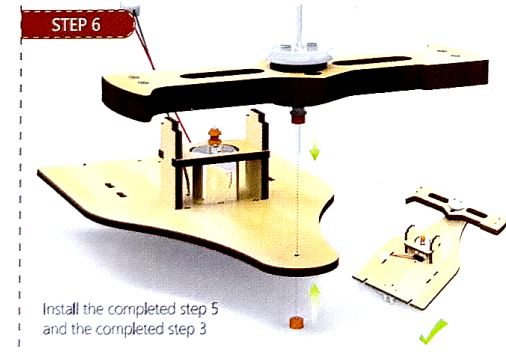
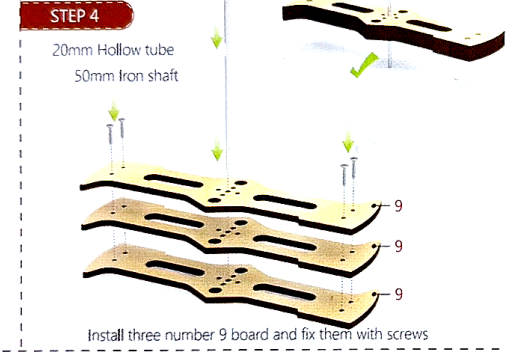
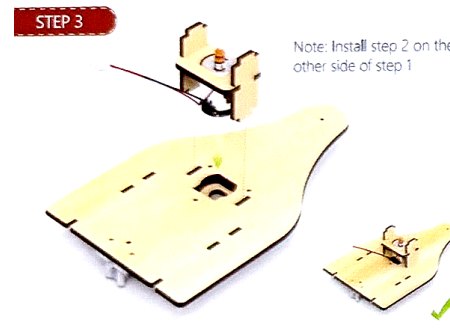
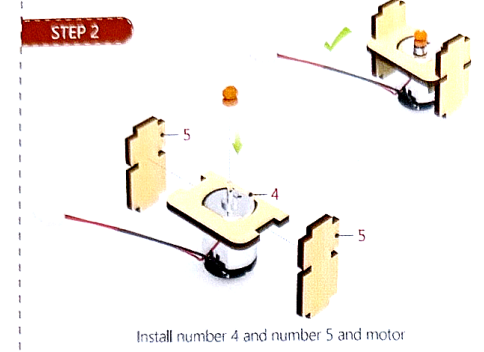
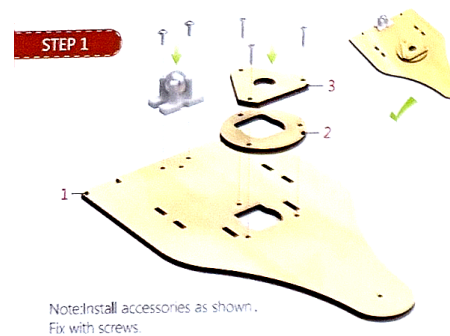
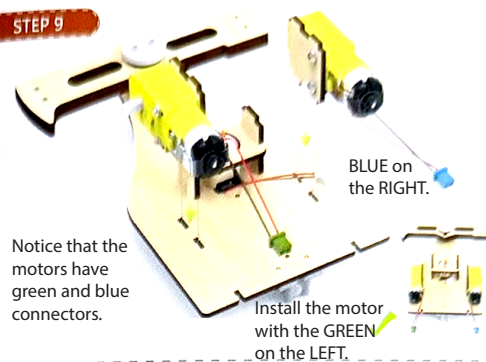


MODBOX™

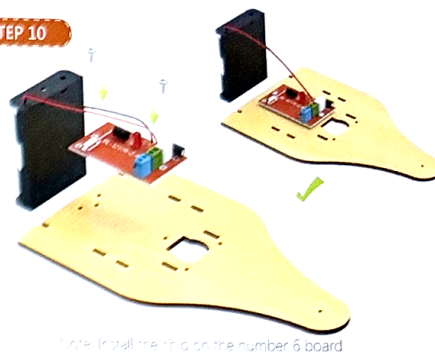
battle robot (slicer)



STEP 9

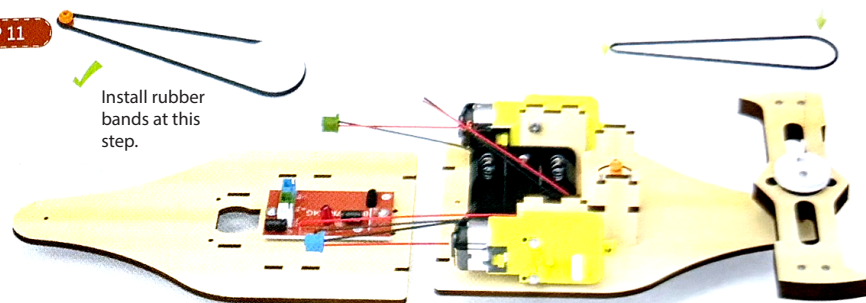


STEP 10

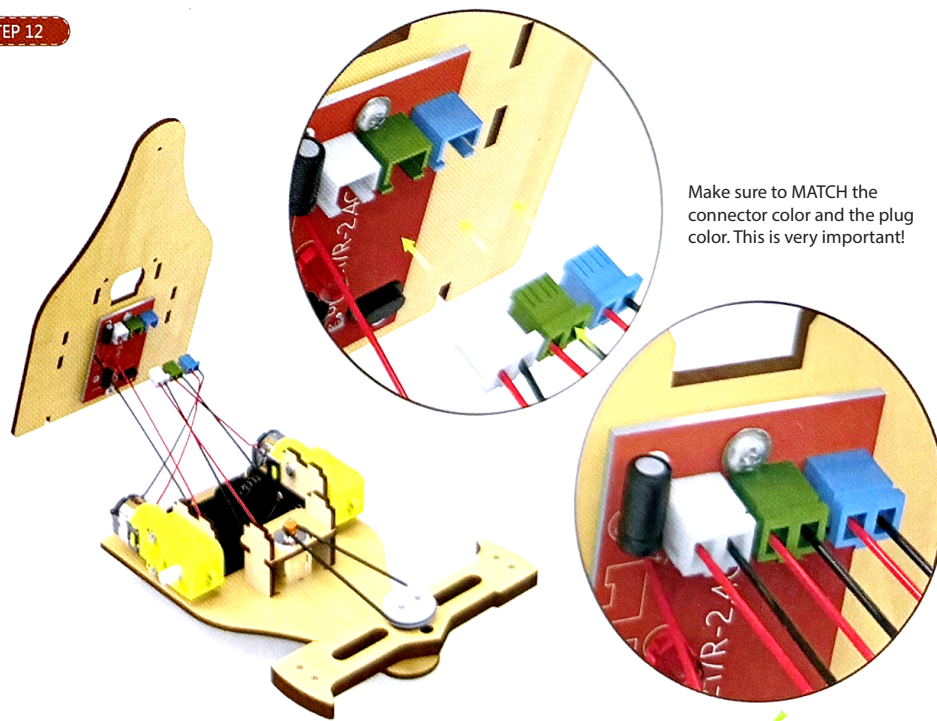


STEP 11

Install rubber bands at this step.

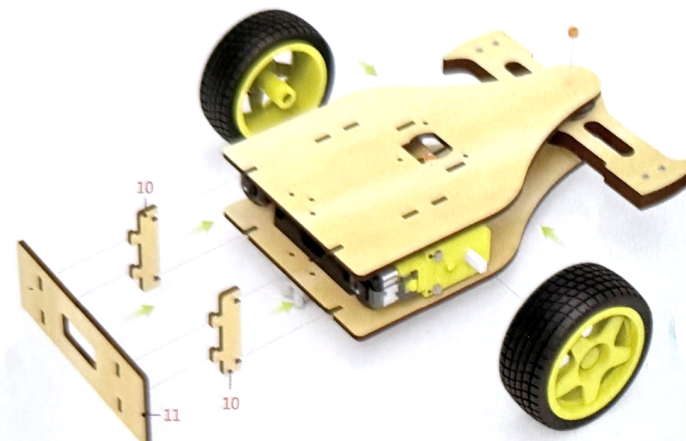


STEP 12

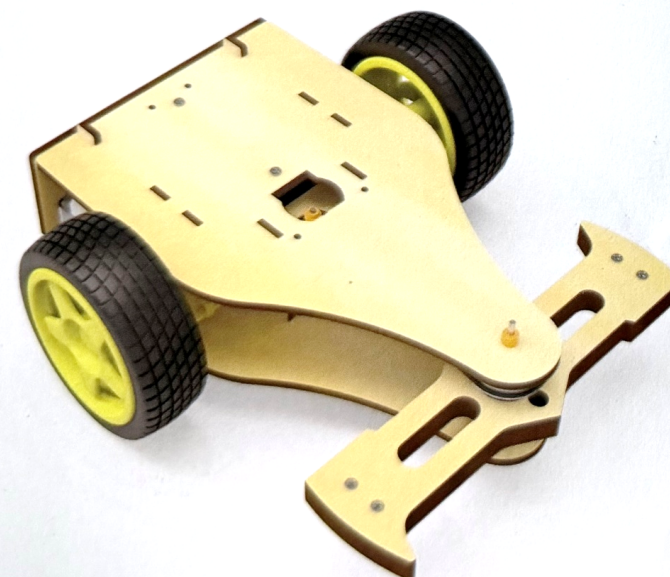


STEP 13

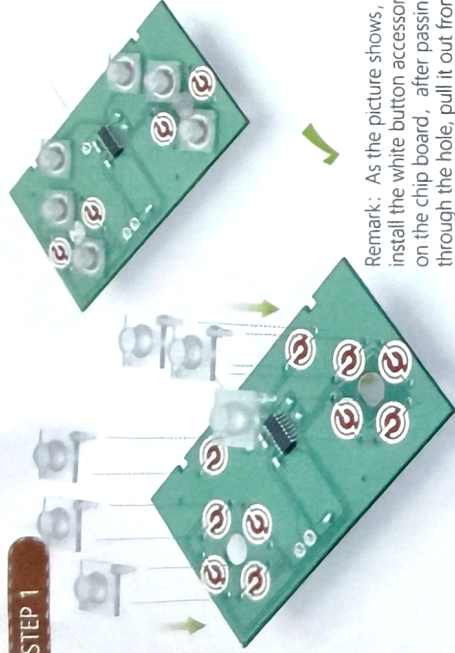
Install number 9 and number 10 and wheel



STEP 14

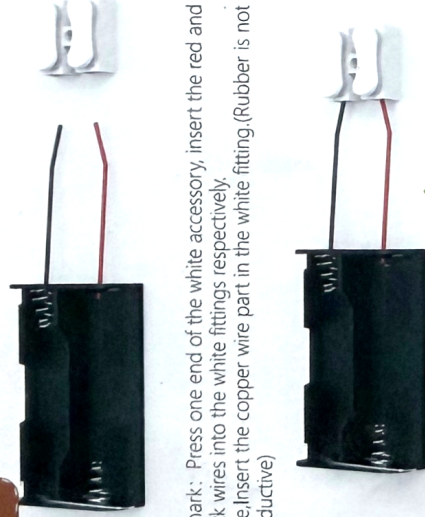


STEP 1



Remark: As the picture shows, install the white button accessory on the chip board, after passing through the hole, pull it out from behind.

STEP 3



Remark: Press one end of the white accessory, insert the red and black wires into the white fittings respectively.
Note: Insert the copper wire part in the white fitting. (Rubber is not conductive)

STEP 5

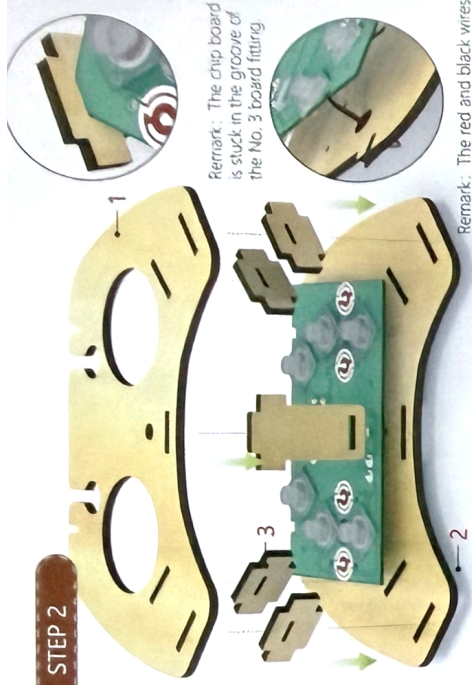


STEP 7



Remark: The grooves in the No. 6 accessory clamp the chip board and the No. 2 accessory respectively. Install according to the picture location

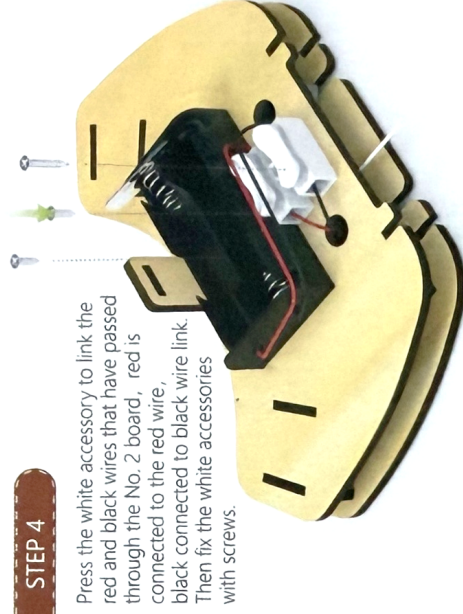
STEP 2



Remark: The chip board is stuck in the groove of the No. 3 board fitting

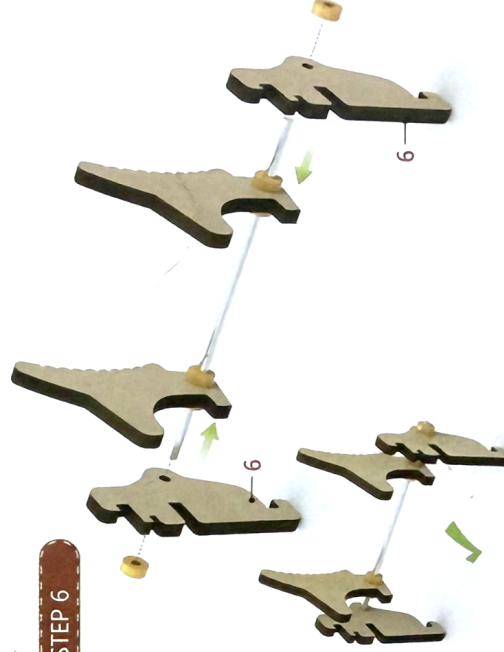
Remark: The red and black wires of the chip board go through the holes of the No. 2 board.

STEP 4



Press the white accessory to link the red and black wires that have passed through the No. 2 board, red is connected to the red wire, black connected to black wire link. Then fix the white accessories with screws.

STEP 6



STEP 8

