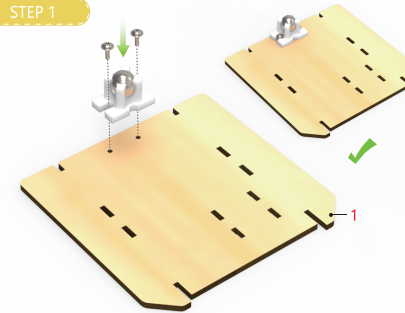


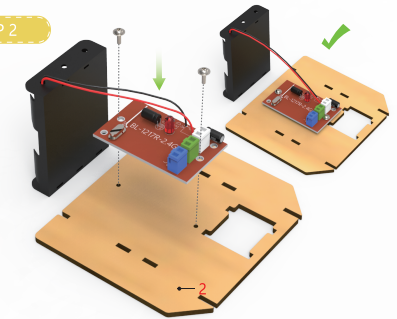
MODBOX™ battle robot (chopper)



STEP 1

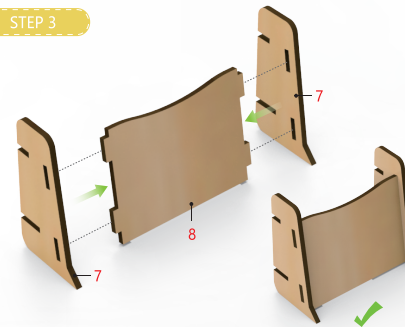


STEP 2

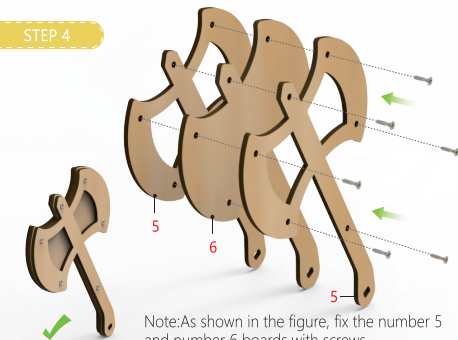


Install the chip on the number 1 board and fix it with screws

STEP 3

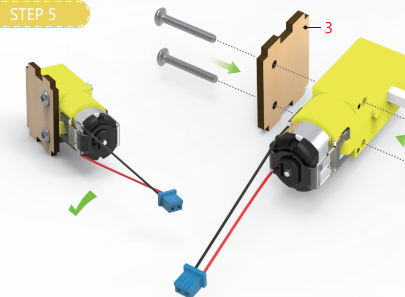


STEP 4



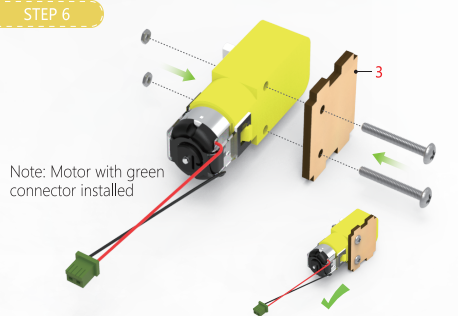
Note: As shown in the figure, fix the number 5 and number 6 boards with screws.

STEP 5



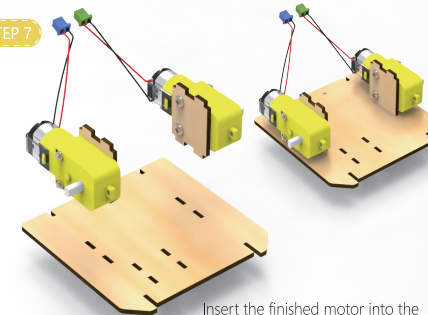
Note: Motor with blue connector installed

STEP 6



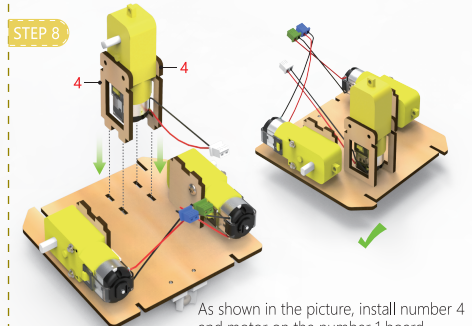
Note: Motor with green connector installed

STEP 7



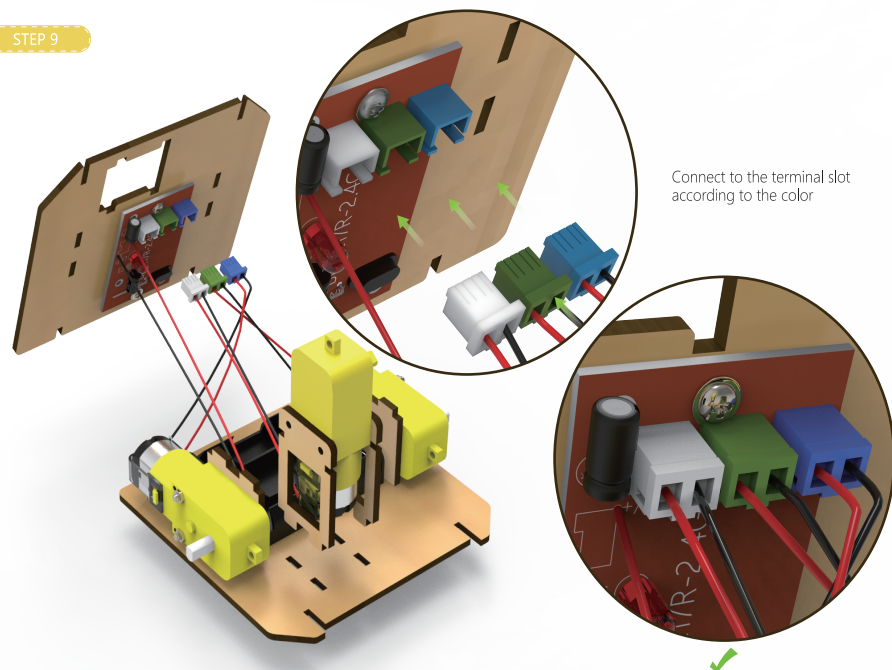
Insert the finished motor into the number 1 board respectively

STEP 8



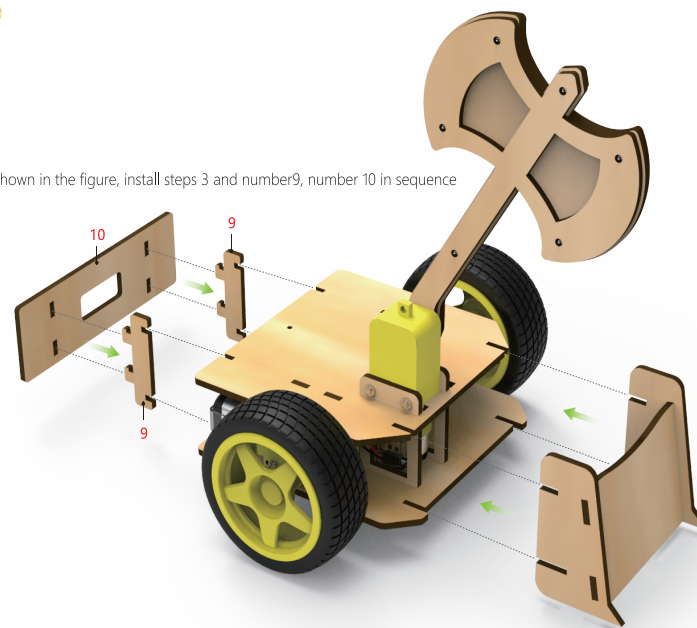
As shown in the picture, install number 4 and motor on the number 1 board

STEP 9

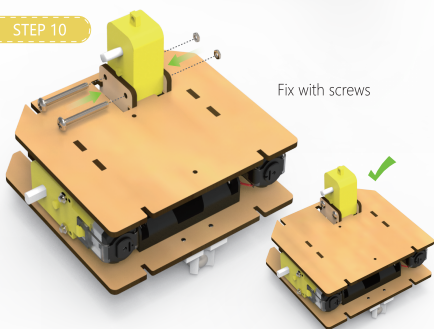


STEP 12

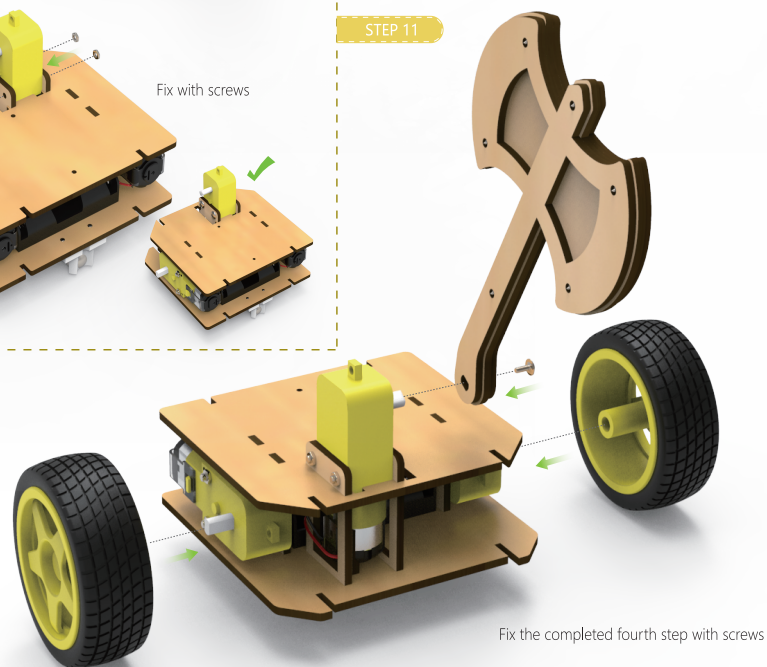
As shown in the figure, install steps 3 and number9, number 10 in sequence



STEP 10



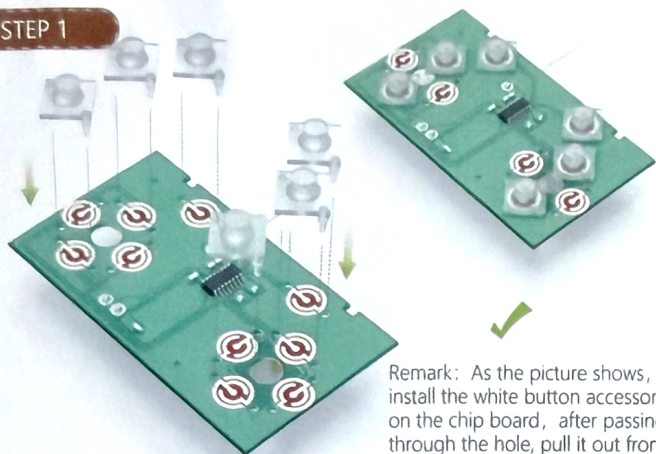
STEP 11



STEP 13

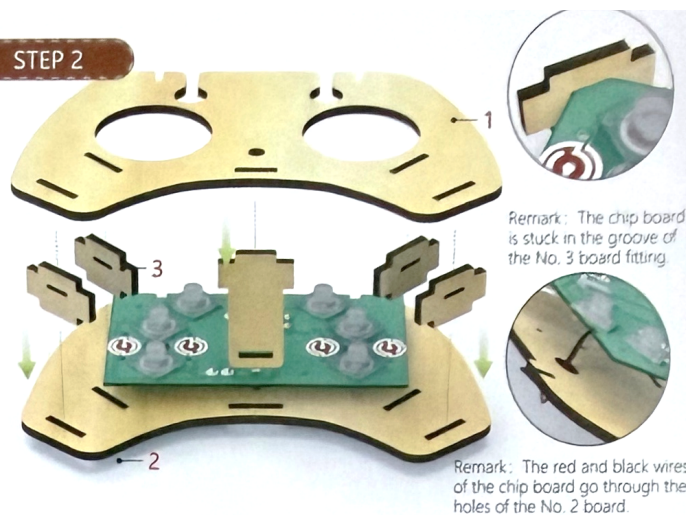


STEP 1



Remark: As the picture shows, install the white button accessory on the chip board, after passing through the hole, pull it out from behind.

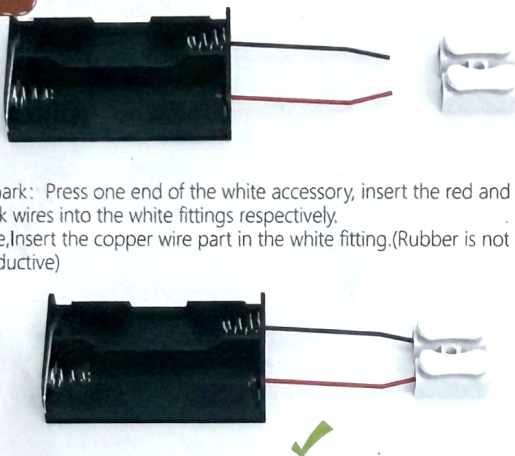
STEP 2



Remark: The chip board is stuck in the groove of the No. 3 board fitting.

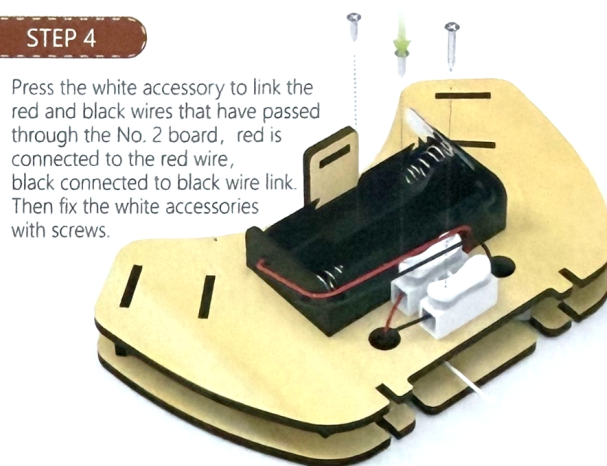
Remark: The red and black wires of the chip board go through the holes of the No. 2 board.

STEP 3



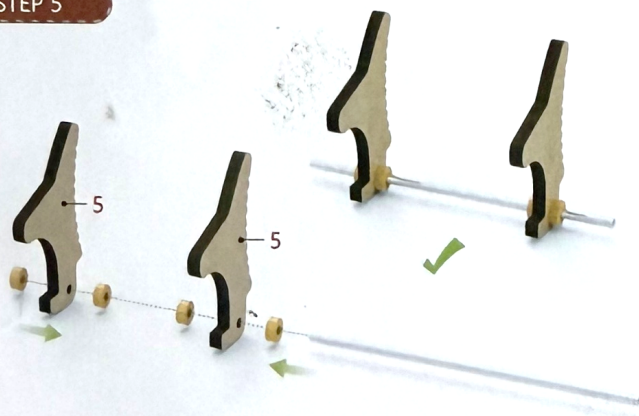
Remark: Press one end of the white accessory, insert the red and black wires into the white fittings respectively.
Note: Insert the copper wire part in the white fitting. (Rubber is not conductive)

STEP 4

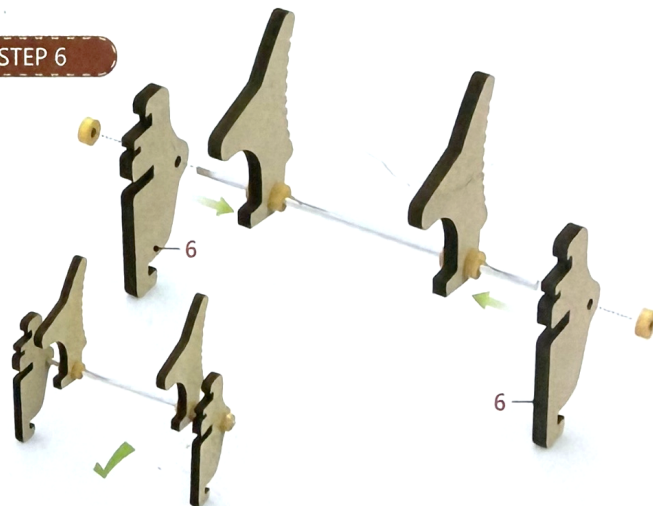


Press the white accessory to link the red and black wires that have passed through the No. 2 board, red is connected to the red wire, black connected to black wire link. Then fix the white accessories with screws.

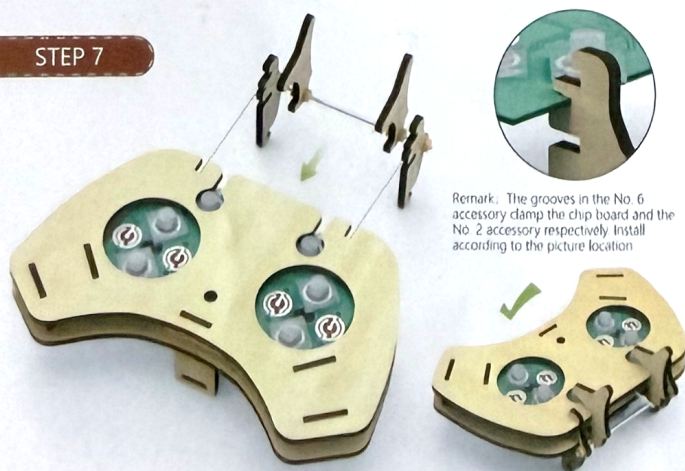
STEP 5



STEP 6



STEP 7



Remark: The grooves in the No. 6 accessory clamp the chip board and the No. 2 accessory respectively. Install according to the picture location.

STEP 8

